



# INDOFINE Chemical Company, Inc.

121 Stryker Lane, Bldg. 30, Suite 1 • Hillsborough, NJ 08844 • U.S.A.

Phone: (908) 359-6778 • FAX: (908) 359-1179

website: [www.indofinechemical.com](http://www.indofinechemical.com)

e-mail: [chemical@indofinechemical.com](mailto:chemical@indofinechemical.com)

## CERTIFICATE OF ANALYSIS

Cat No.: D-012

Product: **2',6'-DIMETHOXY ACETOPHENONE**

Cas Number: [2040-04-2]

Lot Number: 0312203

Chemical Formula: C<sub>10</sub>H<sub>12</sub>O<sub>3</sub>

Molecular Weight: 180.21

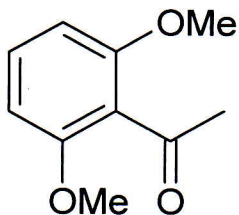
Melting Point: 69.3-70.4°C

Appearance: White shining powder

Solubility: Soluble in Chloroform

Storage Cool dry place

Purity (HPLC): 99.9%



# ICG INDOFINE Chemical Company, Inc.

121 Stryker Lane, Bldg. 30, Suite 1 • Hillsborough, NJ 08844 • U.S.A.

Phone: (908) 359-6778 • FAX: (908) 359-1179

website: [www.indofinechemical.com](http://www.indofinechemical.com)

e-mail: [chemical@indofinechemical.com](mailto:chemical@indofinechemical.com)

## HPLC ANALYSIS

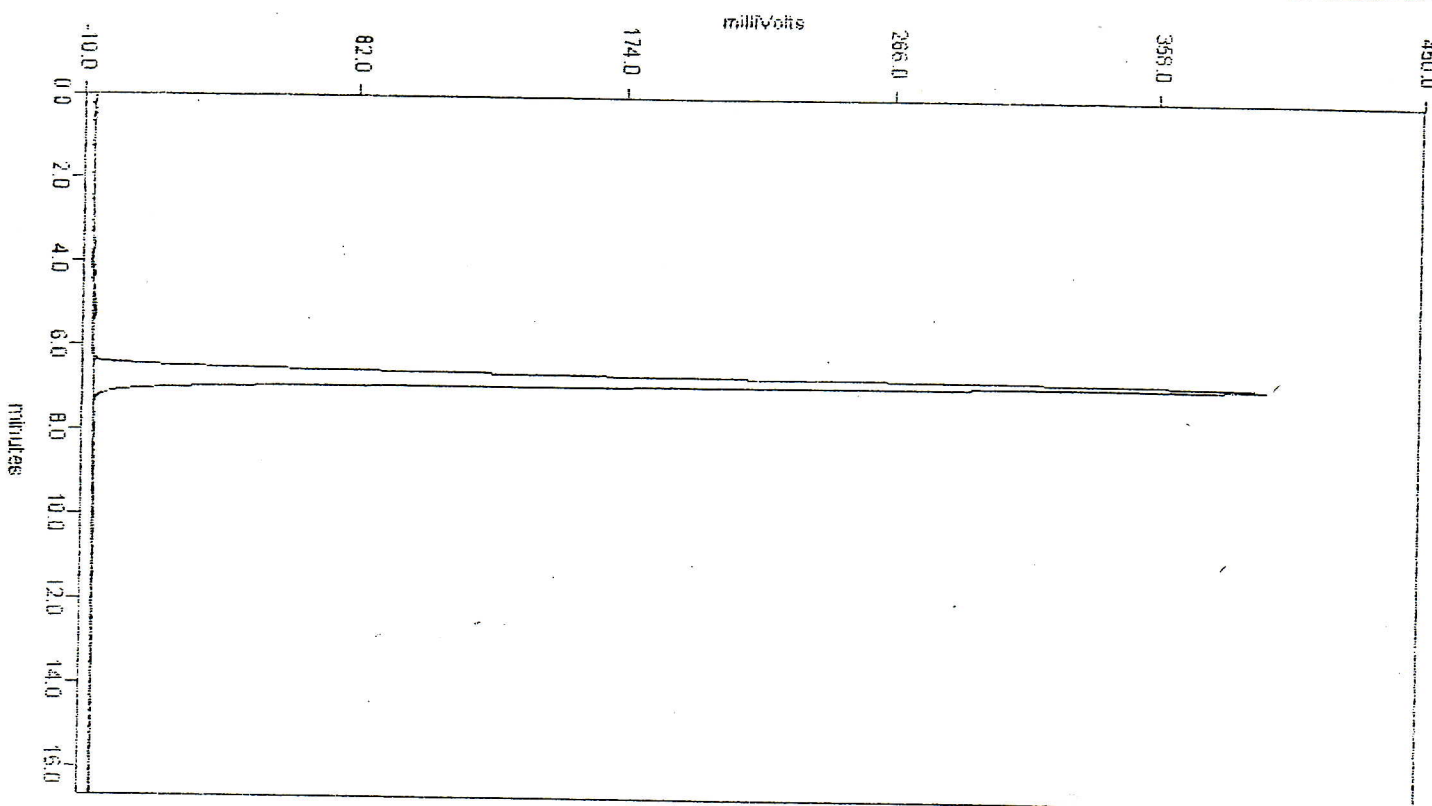
Catalog No.: D-012

Product name: 2',6'-Dimethoxyacetophenone

Lot No.: 0312203

DELTA CHROMATOGRAPHY DATA SYSTEM

STRIPCHART PLOT FOR CHROMATOGRAM - c:\deltaw\data\np-390.raw



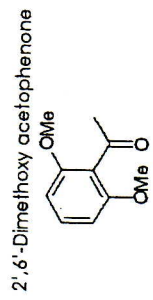
DELTA CHROMATOGRAPHY DATA SYSTEM

LISTING PEAK TABLE FOR CHROMATOGRAM - c:\deltaw\data\np-390.raw.RAW

#	Type Name	Ret.Time	Area(uVSec)	Height(mV)	Area Percent
1	BV	4.27	4909	1.3	0.1
2	VB	6.79	6275999	402.6	99.9

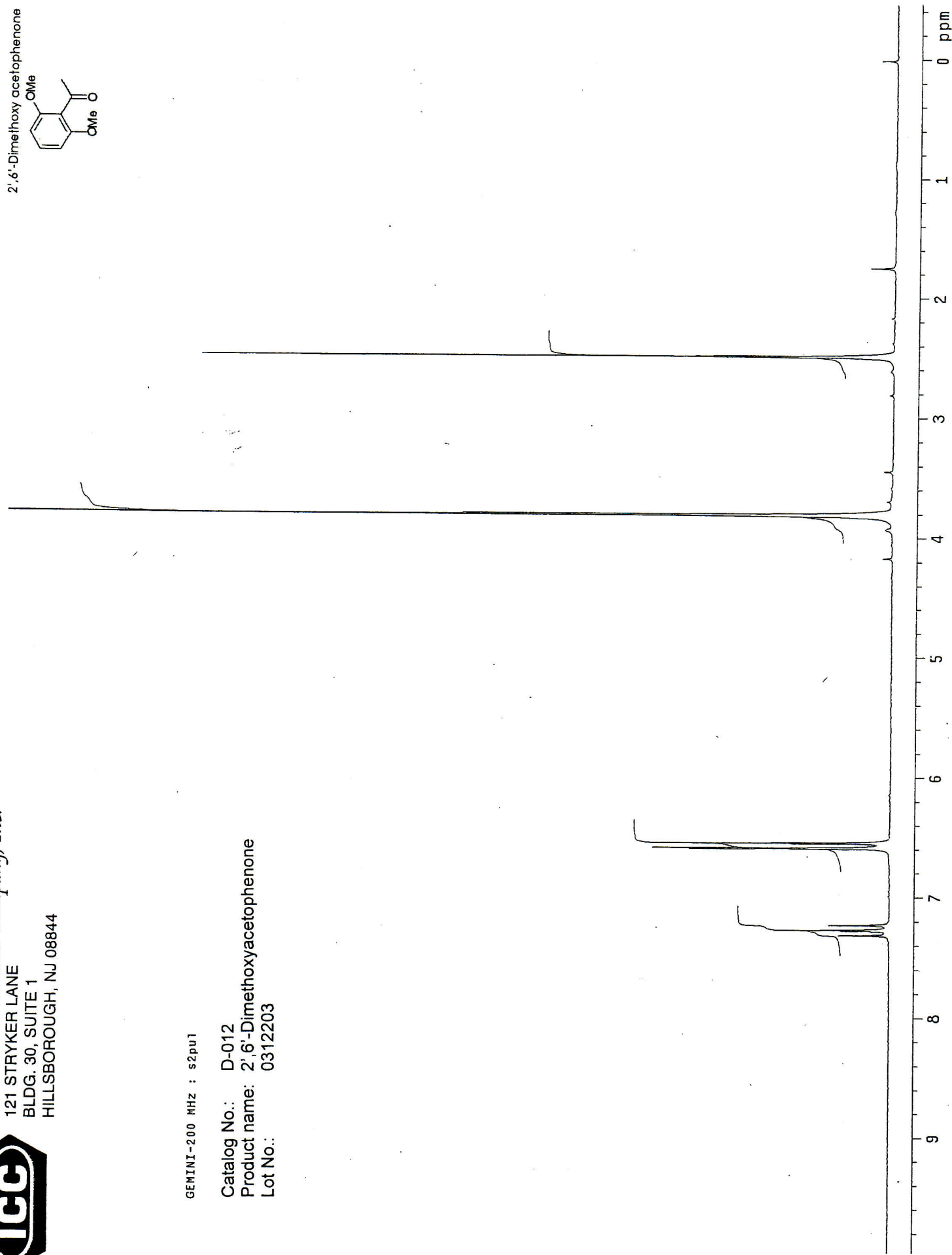


**INDOFINE Chemical Company, Inc.**  
121 STRYKER LANE  
BLDG. 30, SUITE 1  
HILLSBOROUGH, NJ 08844



GEMINI-200 MHz : s2pu1

Catalog No.: D-012  
Product name: 2',6'-Dimethoxyacetophenone  
Lot No.: 0312203



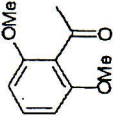


INDOFINE Chemical Company, Inc.

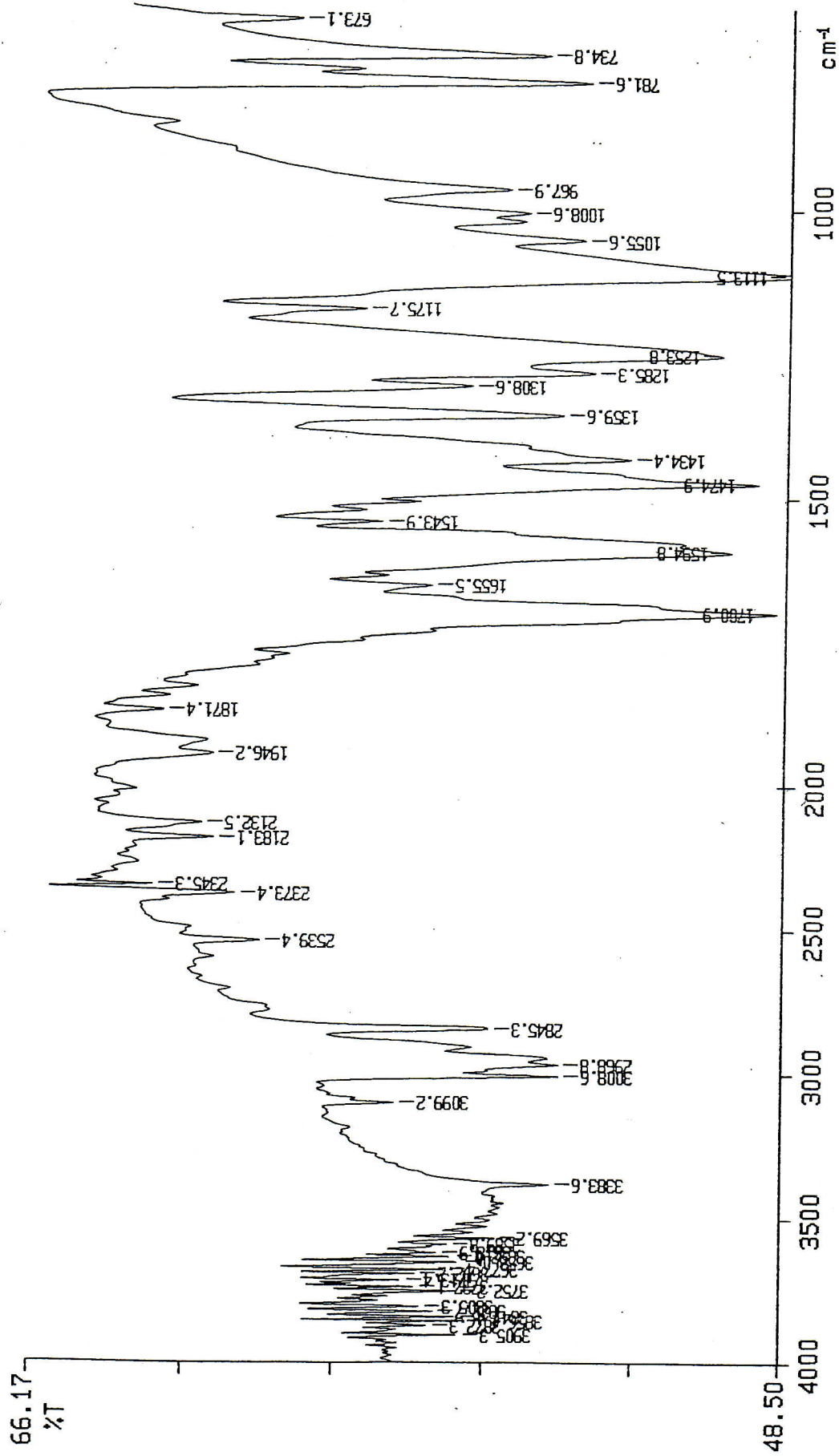
121 STRYKER LANE  
BLDG. 30, SUITE 1  
HILLSBOROUGH, NJ 08844

PERKIN ELMER

2,6-Dimethoxy acetophenone



Catalog No.: D-012  
Product name: 2,6-Dimethoxyacetophenone  
Lot No.: 0312203



Y: 1 scan, 8.0cm-1  
2,6-DI METHOXY ACETOPHENONE.